

Toronto

METROS

OFFICIAL
PROGRAM

25¢

present



KAZIMIERZ KMIECIK SCORES

Toronto Metro "Selects"

vs.

Wisla - Krakow

VARSITY STADIUM, JULY 21, 1971



The Bata Soccer
Shoe . . . Solid leather
upper and molded or
replaceable cleats.
Only one of the
complete line of Quality
Shoes now sporting the
"Bata Flash".



Bata
Sports Footwear

The Bata Shoe Company of Canada Limited.



WISLA-KRAKOW

Left to Right, Standing: Michaliziyn, Bronislaw; Gonet, Stanislaw; Lendzion, Wieslaw; Kmiecik, Kazimierz; *Woycik, Ryszard; Polak, Tadeusz; Plonka, Yerzy; Kotlarczyk, Tadeusz; *Stroniarz, Henryk; Matyas, Mieczyslaw. Left to Right, Kneeling: *Musial, Adam; Michaliziyn, Tadeusz; Sarnat, Ryizard; Studnicki, Czeslaw; Skupnik, Hubert; Sputo.

*—Members of the Polish National Team.

**TORONTO
METRO'S
DIRECTORY**

President John Fisher
 Vice-President & General Mgr Jack Daley
 Secretary-Treasurer Bruce Thomas
 Head Coach Graham Leggat
 Player Personnel Arthur Rodrigues
 Trainer James Gilmour
 Team Doctor Dr. Simon McGrail
 Office Address 77 York Street
 Office Phone 416, 367-0172
 Varsity Box Office 416, 923-9545
 Team Colours White, Blue & Red

**NORTH AMERICAN SOCCER LEAGUE
STANDINGS — JULY 21, 1971**

	GP	W	T	L	GF	GA	BP	Pts
NORTHERN DIVISION								
Rochester Lancers ..	17	9	5	3	33	23	32	101
New York Cosmos ..	16	6	3	7	33	34	31	76
TORONTO METROS	15	2	6	7	20	30	20	50
Montreal Olympic....	15	2	3	10	13	33	13	34
SOUTHERN DIVISION								
Atlanta Chiefs.....	18	11	3	4	32	21	30	105
Dallas Tornado	17	6	7	4	27	18	22	81
Washington Darts....	17	5	7	5	25	24	24	75
St. Louis Stars	16	4	3	9	22	34	22	55

**INTERNATIONAL CUP
(4 Games)**

TEAM	GP	W	T	L	GF	GA	BP	Pts
Rochester	3	2	1	0	7	2	6	21
Atlanta	3	2	1	0	5	3	5	20
Dallas	3	1	2	0	5	0	3	15
St. Louis	3	1	0	2	4	6	4	10
New York	3	0	1	2	6	10	6	9
TORONTO	2	0	0	2	2	6	2	2
Washington	2	0	0	2	1	5	1	1
Montreal	2	0	0	2	1	11	1	1

FUTURE GAMES

Wednesday—Apollon at Montreal, 8:00 p.m.
 Wisla-Krakow at Toronto, 8:00 p.m.
 Friday —Dallas at Atlanta, 8:05 p.m.
 Saturday —Montreal at Dallas, 7:30 p.m.
 Toronto at New York, 6:00 p.m.
 Apollon at Washington, 4:00 p.m.
 Rochester at St. Louis, 1:00 p.m.



"EXP"

PLAIN OR FILTER —

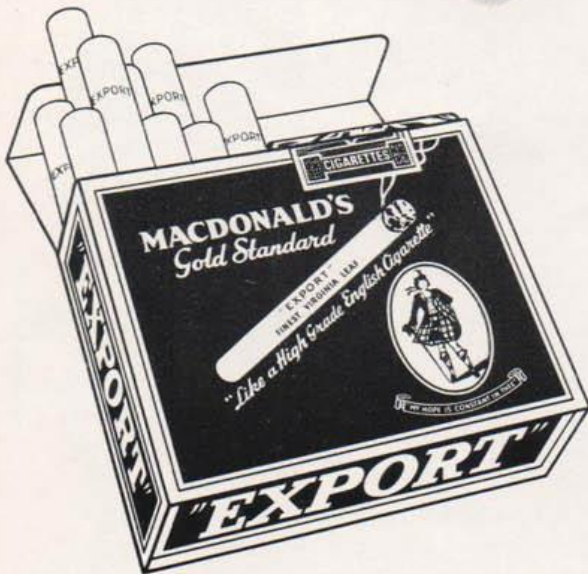
TORONTO METRO "SELECTS"

No.	Player
1	Dick Howard
2	Brian Rowan
3	Tony Lecce
4	Julio Amador
5	Antonio Medeiros
9	Walter Muir
10	Ian MacHattie
11	Dave Thomson
12	Felix Correia
14	Joao da Costa

National League: —George Simchich, Toronto Croatia; —Coro, First Portuguese; —Paulino Ferrari, Toronto Ukania; —Alija Solak, Toronto Croatia; —Lewes Eversley, Toronto Hungaria; —Allen O'Neil, Hellas A.C.; —Mario Pizuti, Sudbury; —Allan aBettinson, Toronto Ukania.

T & D League: —Tony Tighe, Toronto Emerald; —Julio Mattachione, LaSora; —Angus Dennison, Caledonia; —Rolf Hermann, Oakville; —Hugh Sheils, San Fili; —Sergio DeLuca, San Fili.

COACH: Graham Leggat
PLAYER PERSONNEL: Arthur Rodrigues
TRAINER: James Gilmour



ORT

REGULAR AND KINGS



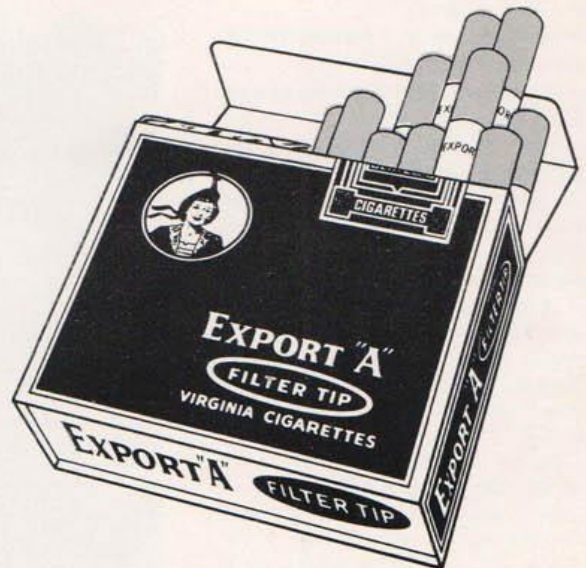
WISLA-KRAKOW

No.	Player
* 1	Stroniarz, Henryk
2	Polak, Tadeusz
* 3	Woycik, Ryszard
* 4	Musial, Adam
5	Plonka, Yerzy
6	Maculewica, Henryk
7	Lendzion, Wieslaw
8	Kmiecik, Kazimierz
9	Krawczyk, Zbigniew
10	Sarnat, Ryizard
11	Skupnik, Hubert
12	Gonet, Stanislaw
13	Kotlarczyk, Tadeusz
14	Kapwa, Zdzislaw
15	Michaliizyn, Tadeusz
16	Garley, Andrezey
17	Studnicki, Czeslaw

* Polish National Team

COACH: Mieczyslaw, Matyas

DON'T MISS: Apollon of Greece
July 28, Kickoff - 8 p.m.
Tickets at Box Office



GLOSSARY OF SOCCER TERMS

Loft or Lob—A high, soft kick, usually a kick over the heads of the defense.

Mark or Marking—Covering and guarding a player so closely that it becomes quite difficult for him to receive a pass.

Obstruct—To hamper the movements of an opponent by remaining in the path he wishes to travel.

Off-Side—Basic rules concerning offside are:

- a. There must be two opposing players between an offensive player and the opponent's goal unless an opponent or the player himself last touched it. (THE GOALIE IS CONSIDERED A PLAYER).
- b. A player cannot be off-side in his own half of the field.
- c. A player cannot be off-side on:
 - (1) a goal kick.
 - (2) a corner kick
 - (3) a dropped ball
 - (4) if player is behind the ball when it is last played.

Pass—To kick or head the ball to a teammate.

Penalty Area—That portion of the playing field bounded by lines drawn at right angles to the goal line eighteen yards out from each goal post and eighteen yards into playing field (international).

Penalty Kick—A kick taken from the 12-yard spot in front of the goal. It is awarded the attacking side for intentionally handling (goalkeeper excepted), tripping, charging or holding by the defensive side within the penalty area.

Penalty Shot—A point twelve yards directly in front of each goal usually indicated by a short line.

Pitch—Playing field.

Place Kick—A kick at a non-moving ball placed on the ground.

Punt—To kick a ball as it is dropped from the hands.

Play Them Off-Side—A means of making the offensive players move away from the goal, the offensive players must move or they will be in an off-side position.

Riding a Ball or Cushioning a Ball—A way of reducing the speed of a ball coming at a player, and bringing it under control by using the head, body or feet. Done by giving at the part of the body where the ball hits at the time of impact.

Running of the Ball—When a player moves into an open space, ready to take a pass from his teammate who has the ball, or possibly draw a defender with him, and so leave a gap in the defense.

Save—A stop, by the goalie, of a shot at the goal by one of the opponents, preventing a score.

Scoring Chance—An opportunity to take a shot at the goal.

Screen—To obstruct an opponent's view of the ball.

Side Line—The boundary line marking the long side of the playing field.

Skied—A Ball kicked unnecessarily high the air.

Spot Kick or Penalty Kick—A direct free kick from a spot twelve yards out from the mouth of the goal awarded to a team when an opposing player commits a personal foul inside his penalty box.

Stalemate—Two players face each other and each waits for the other to make a move.

Stop—The catch or deflection of a shot by the goalkeeper. Usually used in referring to the number of times the goalkeeper prevented a score.

Strong Feet—The foot with which the player is most proficient.

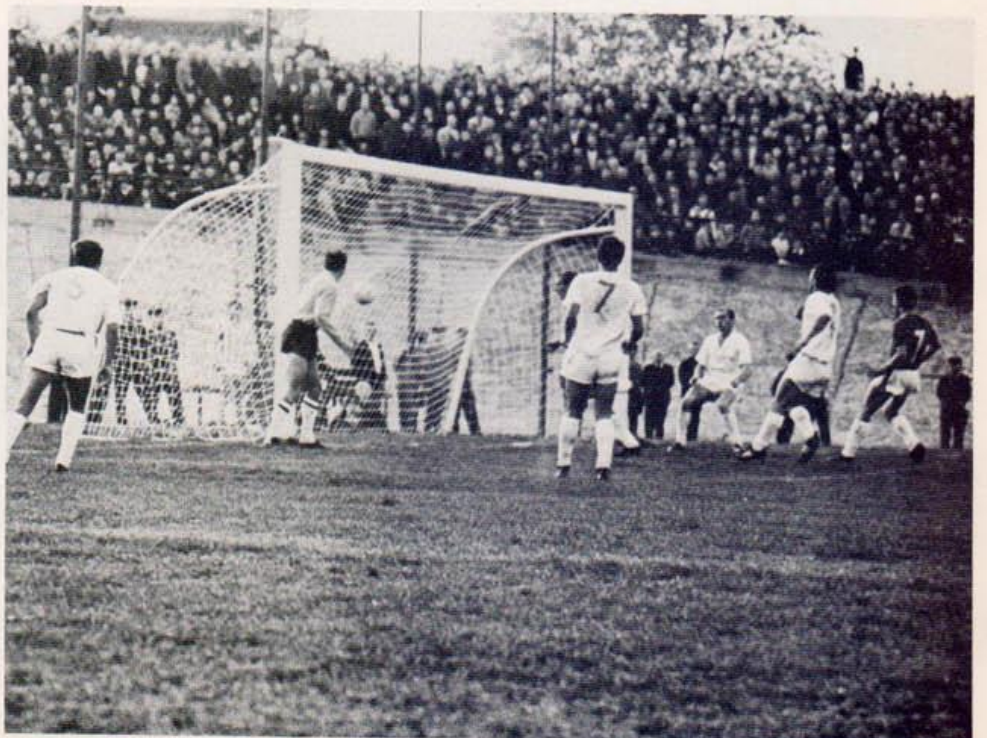
Sweeper—A defender whose job it is to pick up loose balls coming through the defense, and start his team on the offense.

Tackle (Tackling)—An attempt to kick the ball away from an opponent, to make him loose control of it, or to cause him to hurry his pass.

Throw-In—When the ball goes out of bounds at the sidelines, and opponent of the team which sent it out is given the ball to throw back into play.



WIESLAW LENDZION (Dark Jersey) LEADS THE BALL



GOAL SCORED BY HUBER SKURNIK